

| Class 230' Liftboat

Overview

LEG

Leg Length	229 ft
Leg Diameter (Od)	70 in
Leg Tower Height	13.75 ft

HULL

Length (Overall)	133.5 ft
Length (Barge Only)	133.5 ft
Beam (Overall)	79 ft
Beam (Barge Only)	79 ft
Hull Depth	13 ft

PAD

Length	36 ft
Width	14 ft
Depth	4 ft
Bearing Load	N/A
Design	2-Way Slope

CRANE

	Port	Starboard
Load Rating	100 ton	25 ton
Make	Titan	EBI
Model	1600HC	TC30-40-70
Boom Type	Lattice	Telescopic
Boom Length	100 ft	70 ft
Crane Inst. Type	Deck Mount	Deck Mount

PROPULSION

Mains - Make	GM
Mains - Model	12V149
Horsepower	1880 hp
Bow Thruster Equipped	No
Clutch Make/Reduction	Twin Disc 5.17:1
Consumption/Engine-Full	48 gph
Consumption/Engine-Half	24 gph

GENERATORS

Generator Engine Make	GM
Generator Engine Model	8V71
Generator Output	150 kw
Consumption/Gen	13.2 gph

DECK

Total Deck Area	5,821 ft ²
Clear Deck Area	3,621 ft ²
Additional Clear Area	N/A
Maximum Deck Load	500,000

CAPACITIES

Diesel Fuel	40,230 usg
Lube	150 usg
Hydraulic Oil	3,060 usg
Potable Water	26,820 usg
Watermaker Equipped	No

ELECTRONIC AIDS & COMMUNICATION

Compass	Fully Equipped
Gps/Dgps	Fully Equipped
Radar(s)	Fully Equipped
Fathometer	Fully Equipped
Loudhailer	Fully Equipped
Satellite Phone	Fully Equipped
VHF Radio	Fully Equipped
Single Sideband Radio	Fully Equipped
EPIRB	Fully Equipped
GMDSS	No

PERSONNEL ACCOMMODATIONS

Total Accommodations	36
VIP Accommodations	1
Galley & Dining	Fully Equipped
TV Lounge	Fully Equipped
Laundry Facility	Fully Equipped
Air Condition / Heater	Std Central Units

PERFORMANCE

Estimated Speed	6 knots
Max Sep – Pad to Deck	214 ft
Max Working Water Depth	180 ft
Min Working Water Depth	14 ft

DOCUMENTATION

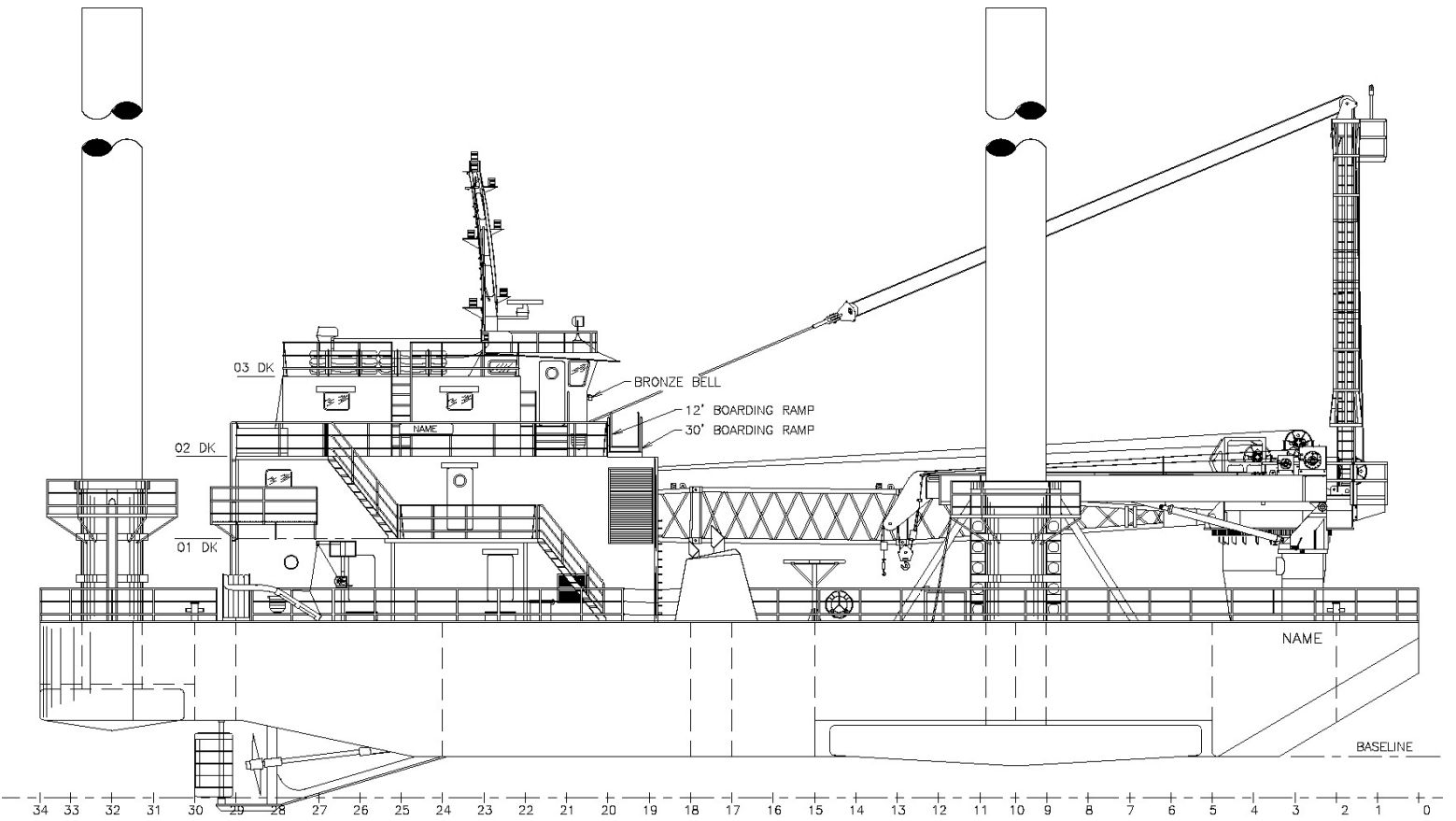
Class	None
Flag/ Port of Registry	USA / New Orleans, LA
USCG	Inspected
SOLAS	No
Official Number	1045921
IMO	8765864
Call Sign	WDH5378
Year Built	1996
Builder	Bollinger Shipyards
Zero Discharge	Yes
Registered Tonnage	188
International Tonnage	1,312

TITAN 100 TON CRANE		
1600HC		
100 FT LATTICE BOOM		
MAXIMUM SAFE WORKING LOAD		
BOOM RADIUS (ft)	ONBOARD LOAD (lbs.)	OFFBOARD LOAD (lbs.)
20	187,848	124,232
25	185,596	122,731
30	182,830	120,887
35	180,824	119,549
40	166,088	109,725
45	147,229	97,153
50	131,973	86,982
55	119,376	78,584
60	108,798	71,532
65	99,788	65,525
70	92,020	60,347
75	85,253	55,835
80	79,305	51,870
85	74,033	48,335
90	69,328	45,219
95	65,099	42,399
100	61,274	39,849
105	57,781	37,521
MAX	55,234	35,823

FAST LINE RATED FOR 11,000 LBS AT ALL RADII

EBI 25 TON CRANE		
TC30-40-70		
70 FT TELESCOPIC BOOM		
MAXIMUM SAFE WORKING LOAD		
40 FT BOOM RETRACTED		
BOOM RADIUS (ft)	ONBOARD LOAD (lbs.)	OFFBOARD LOAD (lbs.)
10	53,040	34,890
15	39,015	25,540
20	30,465	19,840
25	25,290	16,390
30	21,165	13,640
35	17,490	11,190
40	10,665	6,640
FAST LINE RATED FOR 4,890 LBS AT ALL RADII		
70 FT BOOM EXTENDED		
BOOM RADIUS (ft)	ONBOARD LOAD (lbs.)	OFFBOARD LOAD (lbs.)
10	20,090	20,090
15	20,090	16,860
20	18,860	12,090
25	15,765	10,040
30	13,290	8,390
35	11,340	7,090
40	9,990	6,190
45	8,565	5,240
50	7,590	4,590
55	6,765	4,040
60	6,090	3,590
65	5,490	3,190
70	3,390	1,790
FAST LINE RATED FOR 4,040 LBS UP TO 55 FEET		

Outboard Profile

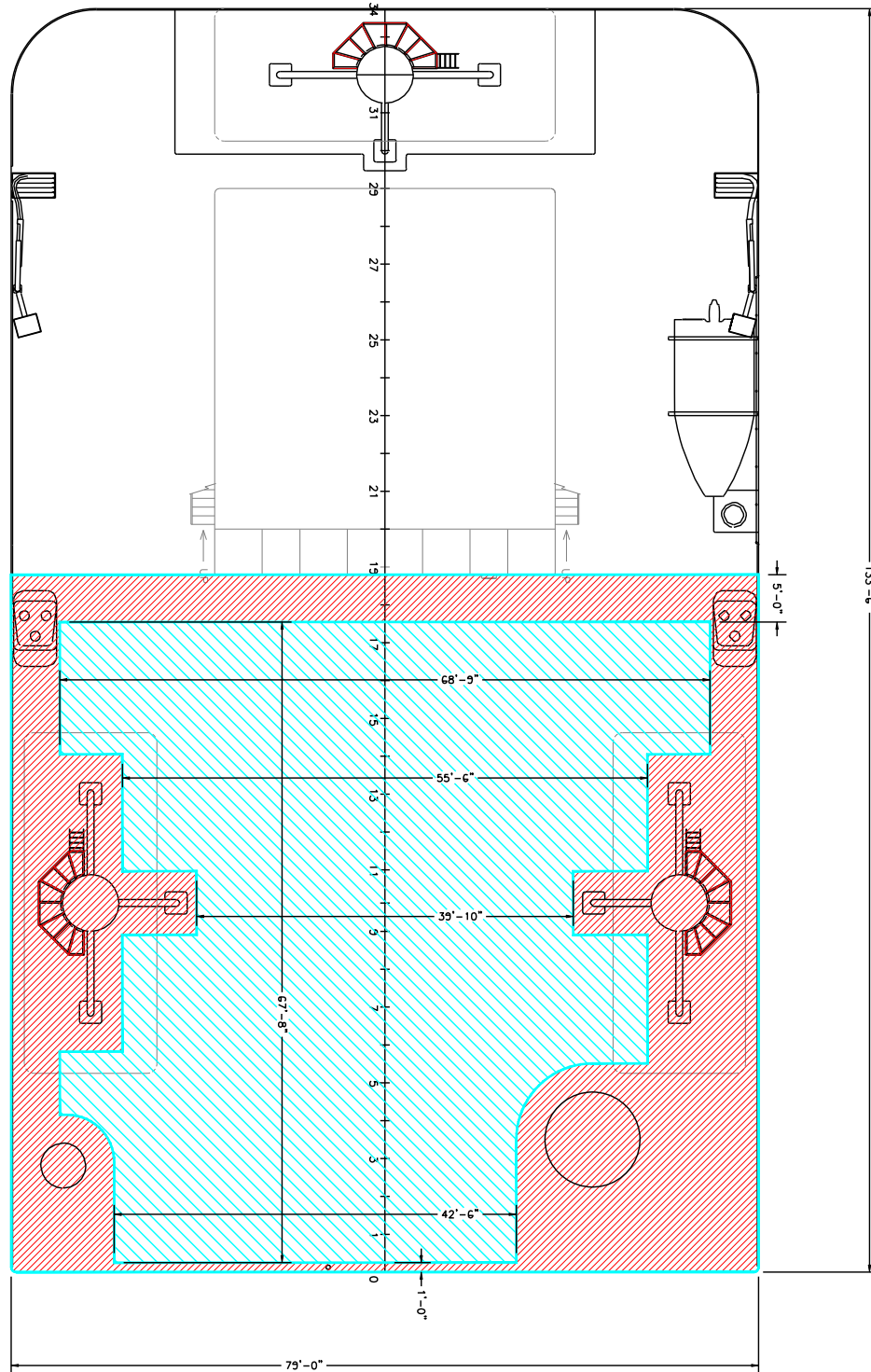


| Class 230' Liftboat

Open Deck Area

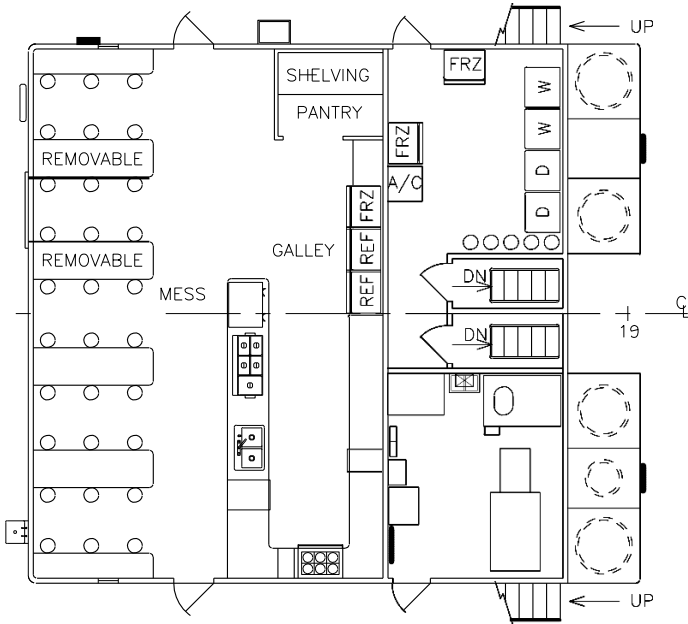
Total Deck Area
5,821 Square Feet

Clear Deck Area
3,621 Square Feet

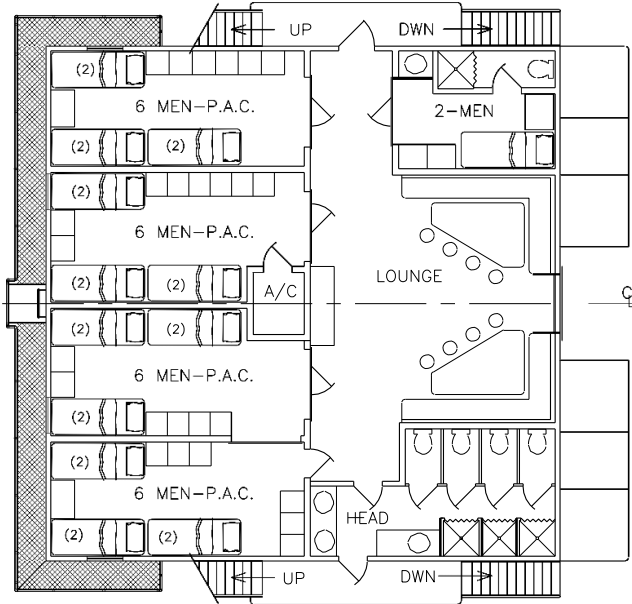


Class 230' Liftboat

Main Deck Quarters



01 Level Quarters



02 Level Quarters

