

built year **DEC.** 2020

length 89.8m

beam 19.2m

depth 5.8m,

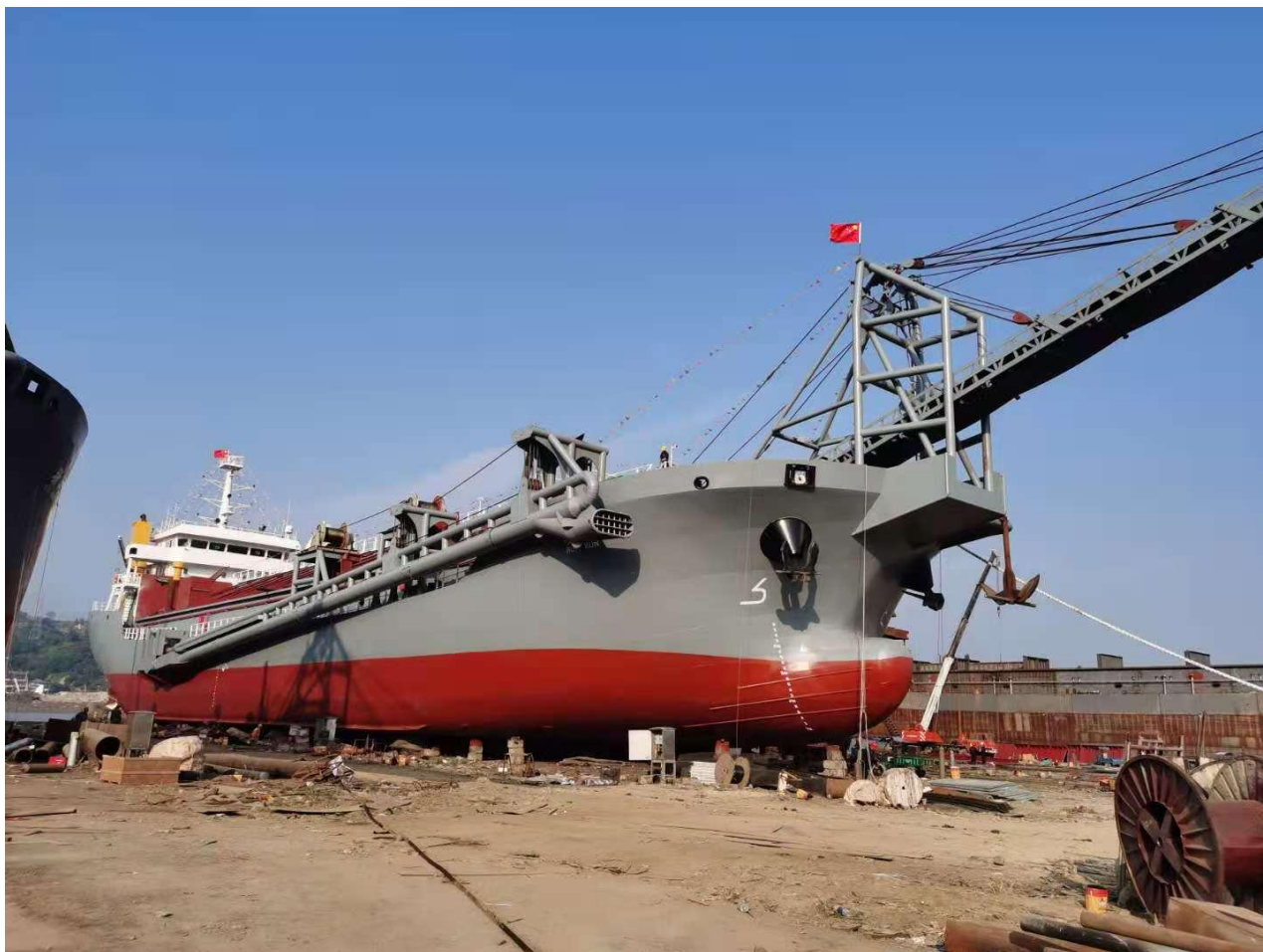
navigation main engine: 1600hp+1600hp yuchai,

conveyor main engine 1600hp yuchai

suction main engine 2400hp, 24 inches pump,

sand-suction time for full loaded vessel full: 1.5hours,

conveyor speed for full loaded vessel: 40mins







起居甲板

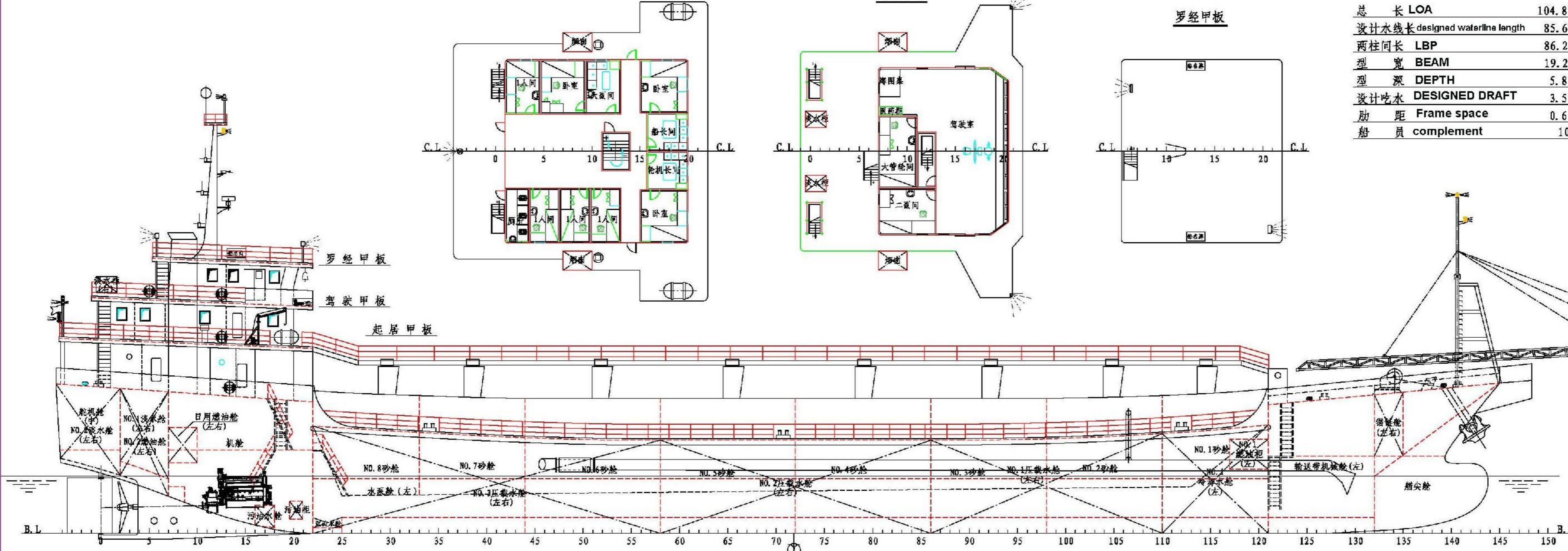
驾驶甲板

罗经甲板

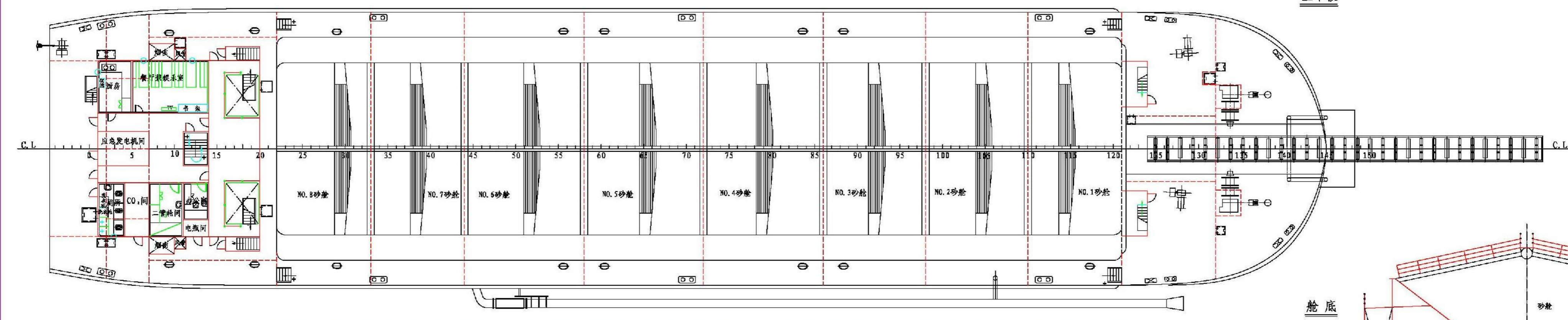
主要量度

总长 LOA	104.80m
设计水线长 designed waterline length	85.60m
两柱间长 LBP	86.24m
型宽 BEAM	19.20m
型深 DEPTH	5.80m
设计吃水 DESIGNED DRAFT	3.55m
肋距 Frame space	0.60m
船员 complement	10人

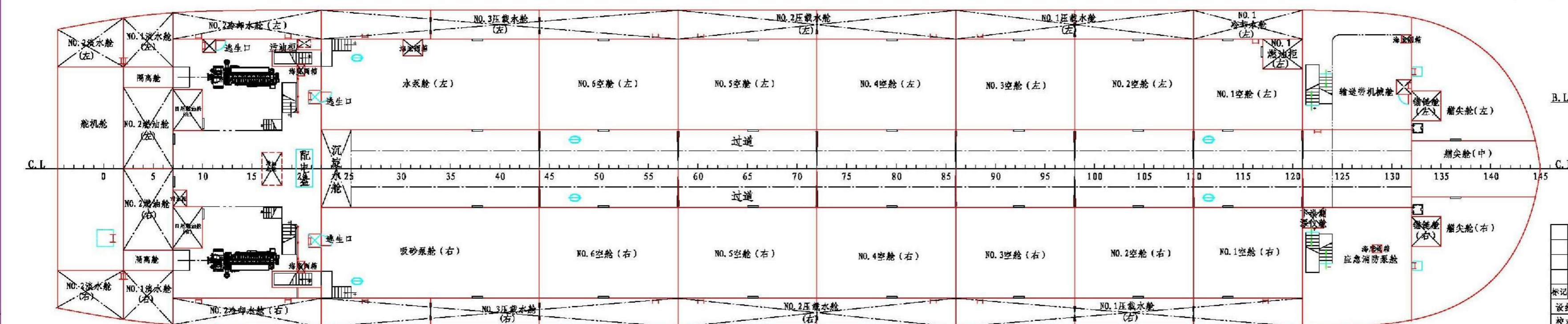
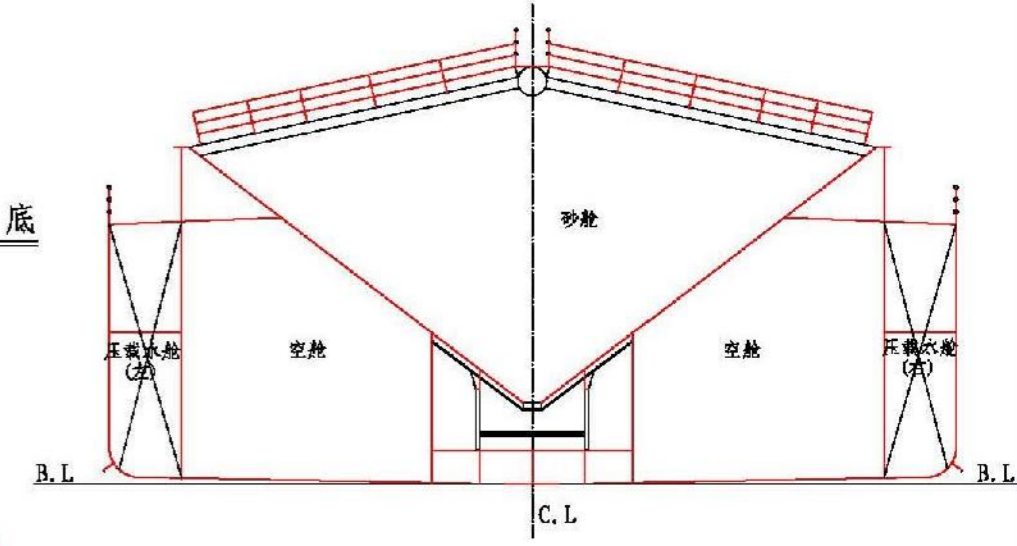
排水量 displacement	4915.4t
主机功率 main engine	1176 x 2 kW
主机转速 Rotation Per Minute	1000r/min
续航力 endurance	800 n.m
第一层甲板间高 no.1 tweendeck height	2.95-3.30m
第二层甲板间高 no.2 tweendeck height	2.60m
第三层甲板间高 no.3 tweendeck height	2.60m



主甲板



舱底



设计阶段 DESIGN STAGE	技术设计
船号 SHIP NO.	ZY4917B-100
图数 PAGES	1/1
重量 WEIGHT	
比例 SCALE	1:150

总布置图

标记/数量	修改单号	签字	日期
该图	DESIGNED		
校对	CHECKED		
审核	VERIFIED		
审定	APPROVED		
日期	DATE	2020.6	