

8

7

6

5

4

3

1

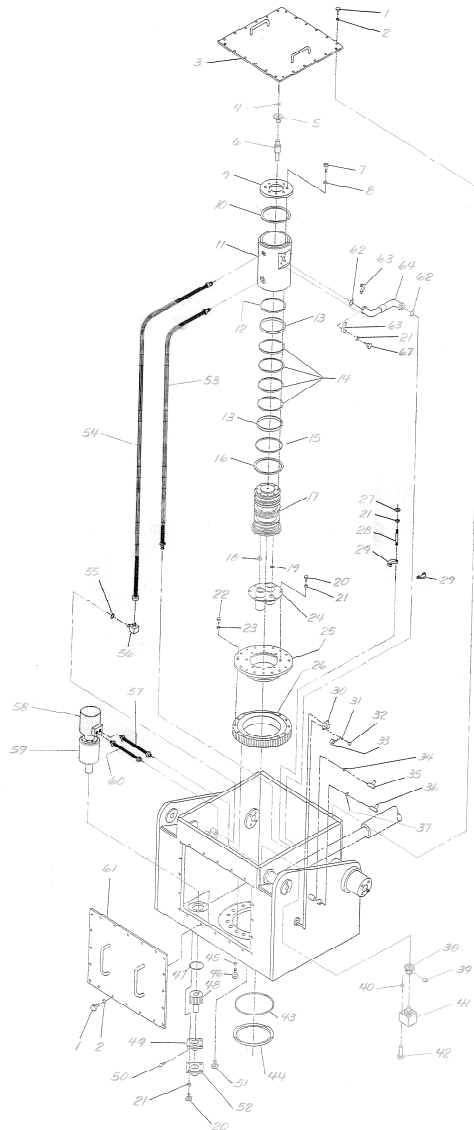
DWG / PART NO.

REV.

REVISIONS			
REV.	DRN	CHK	APP

DATE

NO.	PART NO.	DESCRIPTION
1		
2		
3	B100742-0	5/16-18UNCx3/4 LG. CAD PLATED HEX HEAD CAP SCREW
4		1/16 CAD PLATED SPLIT LOCK WASHER
5	A101302-0	TOP DOOR ASSY
6	C100324-0	3/8-16UNC CAD PLATED HEX NUT
7		SPRCKET
8		DRIVE SHAFT
9	D100328-A	2/8-16UNCx1-1/4 LG. CAD PLATED HEX HEAD CAP SCREW
10	B100423-0	3/8 CAD PLATED SPLIT LOCK WASHER
11	D100327-B	SWIVEL FLANGE
12	B100437-0	THRUST WASHER
13	B100435-0	SWIVEL BARREL
14	B100436-0	UPPER SEAL
15	B100434-0	RADIAL BEARING
16	B100433-0	INTERMEDIATE SEAL
17	D100329-B	LOWER SEAL
18	D101391-B	THRUST WASHER
19	B100396-B	SWIVEL ROTOR
20		SMALL GROMMET
21		LARGE GROMMET
22		1/2-13UNCx1 LG. CAD PLATED HEX HEAD CAP SCREW
23		1/2 CAD PLATED SPLIT LOCK WASHER
24		5/8 13UNCx1-3/4 LG. GRADE 8 ZINC PLATED HEX HEAD CAP SCREW
25	B100325-0	SWIVEL DRIVE SPLIT LOCK WASHER
26	D101397-0	DRIVE COLLAR
27		PISTON BEARING
28		1/2-13UNC CAD PLATED HEX NUT
29	P10006	1/2-13UNCx3-1/2 LG. GRADE 8 STUD
30	P04001	1-1/4-40DD REG. SAE BEVIT FLANGE KIT
31		ELECTRICAL RECEPTACLE
32		4 STAINLESS STEEL SPLIT LOCK WASHER
33	P04002	4-40UNCx3/8 LG. STAINLESS STEEL PAN HEAD SCREW
34		RECEPTACLE CAP
35	P10144	O-RING KIT (FOR 8 SAE O-RING PORT)
36	P10143	SWIVEL ASSY.
37		SWIVEL ASSY.
38		O-RING KIT (FOR 12 SAE O-RING PORT)
39	A101302-0	SPROCKET
40		1/4-20UNCx5/16 LG. STAINLESS STEEL SOCKET HEAD SET SCREW WITH HALF DOG POINT
41	P04302	POSITION TRANSMITTER
42		1/4 20UNCx2-3/4 LG. CAD PLATED SOCKET HD CAP SCREW
43	P05010	DRIVE COLLAR SEAL
44	D100363-A	SEAL RETAINER
45	P07239	SPECIAL FLAT WASHER
46	P07214	SPECIAL HEX HEAD CAP SCREW
47		O-RING KIT-046
48	C100744-B	PISTON GEAR
49	P08007	FLANGED BEARING
50	P10004	GREASE FITTING
51		1" NPT HEX PIPE PLUG
52	B100003-0	BEARING CAP
53	H42512U-R72-R72-18.5C	HYDRAULIC HOSE
54	H42512U-R72-412-20C	HYDRAULIC HOSE
55		O-RING KIT-910 (FOR 10 SAE O-RING PORT)
56	P10142	ADAPTER FITTING
57	H42500U-P08-608-15C	HYDRAULIC HOSE
58	P03100	STEERING MOTOR
59	P03099	STEERING MOTOR BRAKE
60	H42500U-M08-P10-26C	HYDRAULIC HOSE
61	D100743-0	HEAR DOOR ASSY.
62		O-RING KIT-222
63	P10006	1-1/4"-6000 PSI SAE SPLIT FLANGE KIT
64	C100353-B	SWIVEL TUBE ASSY.
65	P08012	CHAIN POSITION TRANSMITTER (FOR USE WITH 41) (NOT ILLUSTRATED)
66	P08043	MASTER LINK (FOR CHAIN 63) (NOT ILLUSTRATED)
67		1/2-13UNCx1-3/4 LG. GRADE 8 ZINC PLATED HEX HEAD CAP SCREW



ALL DATA ON THIS DOCUMENT ARE PRELIMINARY AND MAY NOT BE RELEASED OR DISCLOSED WITHOUT THE EXPRESS WRITTEN PERMISSION OF THRUSTMASTER OF TEXAS, INC. EXCEPT WHERE PROVIDED FOR IN THE LIMITED RIGHTS RELEASE OR THE UNITED STATES GOVERNMENT, IF ANY.		NAME	DATE	THRUSTMASTER OF TEXAS, INC.	
DRN	CHK	APP	REV.	TITLE	
129	TRP	TRP	3-22-91	ASSY-UPPER OUTDRIVE	
DRAWING TOLERANCES			SIZE	DWG / PART NO.	REV.
FAB			D	65848	D101423
X .0005			MATERIAL		
Y .0005			FINISH		
Z .0005			CONTRACT NO.		
THIRD ANGLE PROJECTION			SCALE		
REMOVE ALL BURRS			EST. NO.		
REMOVE ALL SHARP EDGES					
DO NOT SCALE					

8

7

6

5

4

3

A