

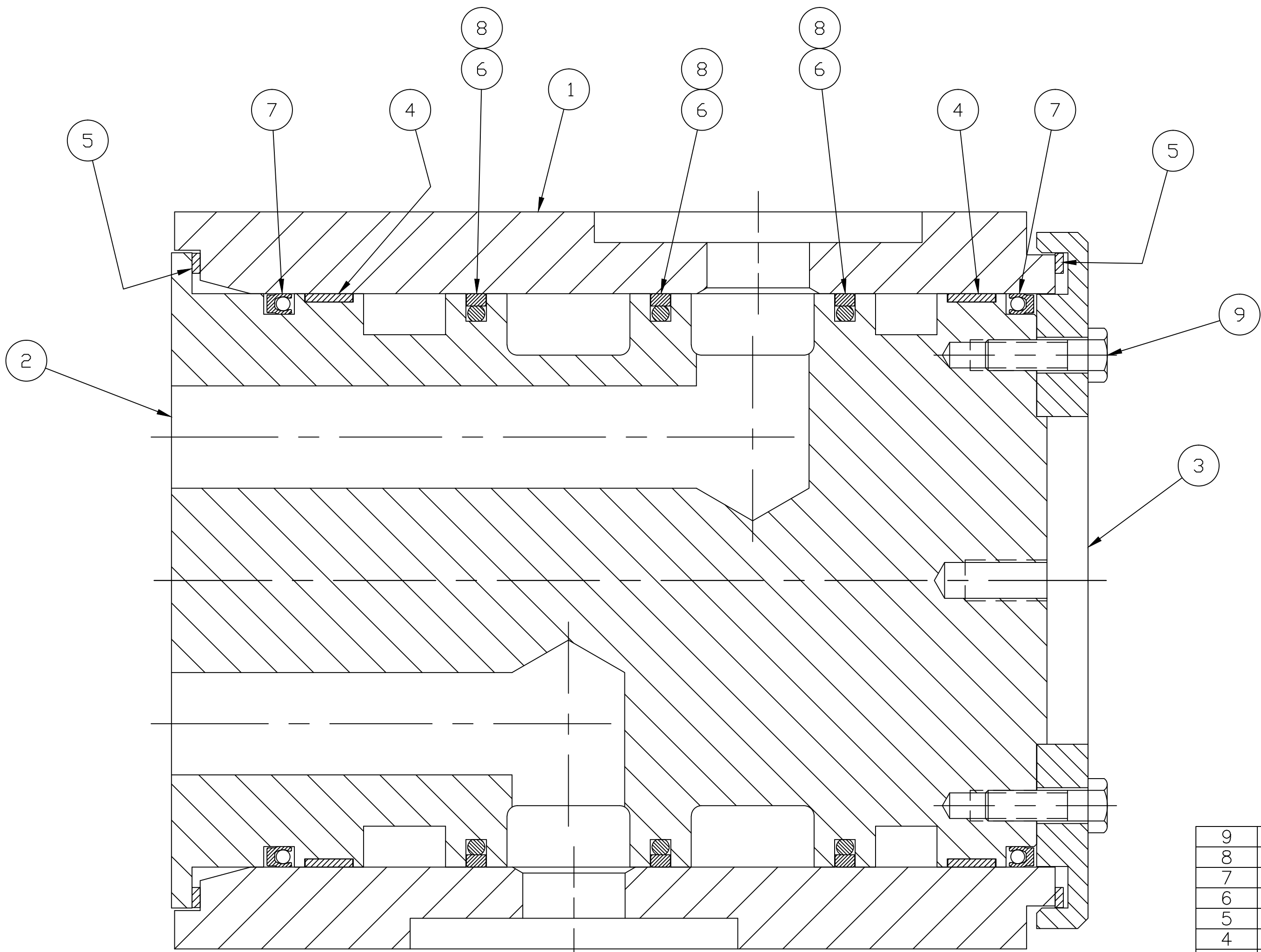
4

3

2

1

REVISIONS			
REV	DRN	CHK	APP
A	JLG	JLG	JRB
DATE: 1/30/96			
QTY OF ITEM 6 WAS 5, P/N OF ITEM 7 WAS B101596			



FIND	QTY	PART NO	DESCRIPTION
9	8	----	HHCS .375-16UNC X 1.25, TEFLON
8	3	B101597	SEAL, INTERMEDIATE
7	2	P05209	SEAL, END
6	3	P05125	O-RING (#2-362)
5	2	B100433	BEARING, THRUST
4	2	B100435	BEARING, RADIAL
3	1	D100328	FLANGE, SWIVEL ROTOR 1.25"
2	1	D101599	ROTOR, SWIVEL 1.25"
1	1	D101598	BARREL, SWIVEL 1.25"

ALL DATA ON THIS DOCUMENT ARE PROPRIETARY AND MAY NOT BE USED, RELEASED, OR DISCLOSED WITHOUT THE EXPRESS WRITTEN CONSENT OF THRUSTMASTER OF TEXAS, INC. EXCEPT WHERE PROVIDED FOR IN THE LIMITED RIGHTS RELEASE TO THE UNITED STATES GOVERNMENT, IF ANY.

© 1987 THRUSTMASTER OF TEXAS, INC.
 THIRD ANGLE PROJECTION
 REMOVE ALL BURRS
 REMOVE ALL SHARP EDGES
 DO NOT SCALE

	NAME	DATE
DRN	JLG	3/26/92
CHK	JRB	3/30/92
APP	JRB	3/30/92

UNSPECIFIED TOLERANCES
 .X = ± .025
 .XX = ± .015
 .XXX = ± .005
 SURFACE FINISH: 125 RHR
 ANGULARITY: ±1°

THRUSTMASTER OF TEXAS, INC.

TITLE: ASSY-SWIVEL, 1-1/4"

SIZE	FSCM NO.	DWG / PART NO.	REV.
C	65848	C101787	A

MATERIAL: _____ FINISH: _____

SCALE: 1/1 EST. WT. 145.0 LBS. SHEET 1 OF 1

4

3

2

1

D

D

C

C

B

B

A

A